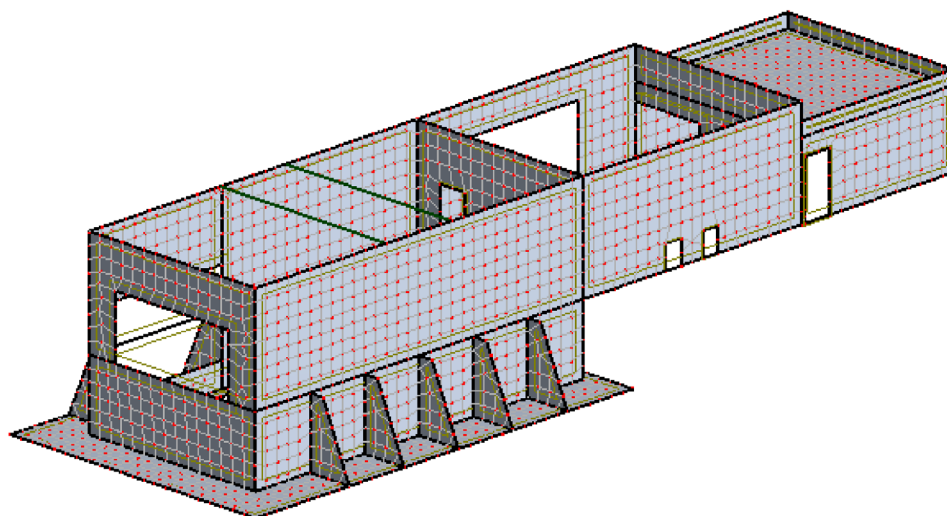


ZOO ZLIN JAGUAR TREK - UBIKACE

Structure View



Data - Materials

	Material	E (MPa)	G (MPa)	NI	LX (1/°C)	RO (kN/m3)	Re (MPa)
1	C25/30	31000,00	12916,67	0,20	0,00	24,53	25,00
2	S 235	210000,00	81000,00	0,30	0,00	77,01	235,00

Data - Bars

Bar	Node 1	Node 2	Section	Material	Length (m)	Gamma (Deg)	Type
147	35	36	QH 200x200x5	S 235	7,60	0,0	Beam
148	37	38	QH 200x200x5	S 235	7,60	0,0	Beam

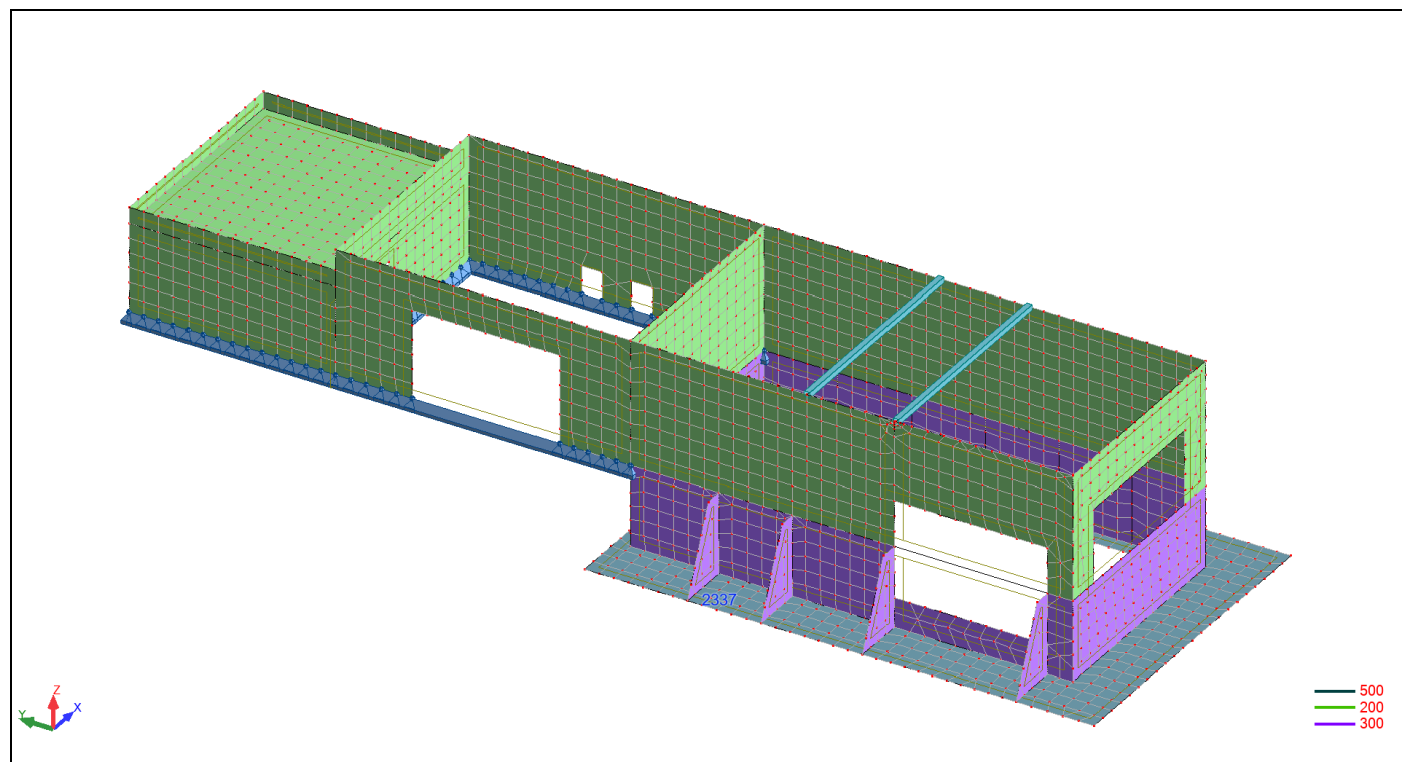
Data - Sections

Section name	Bar list	AX (mm ²)	AY (mm ²)	AZ (mm ²)
QH 200x200x5	147 148	3870	2000	2000
Section name	IX (mm ⁴)	IY (mm ⁴)	IZ (mm ⁴)	
QH 200x200x5	37074375	24450000	24450000	

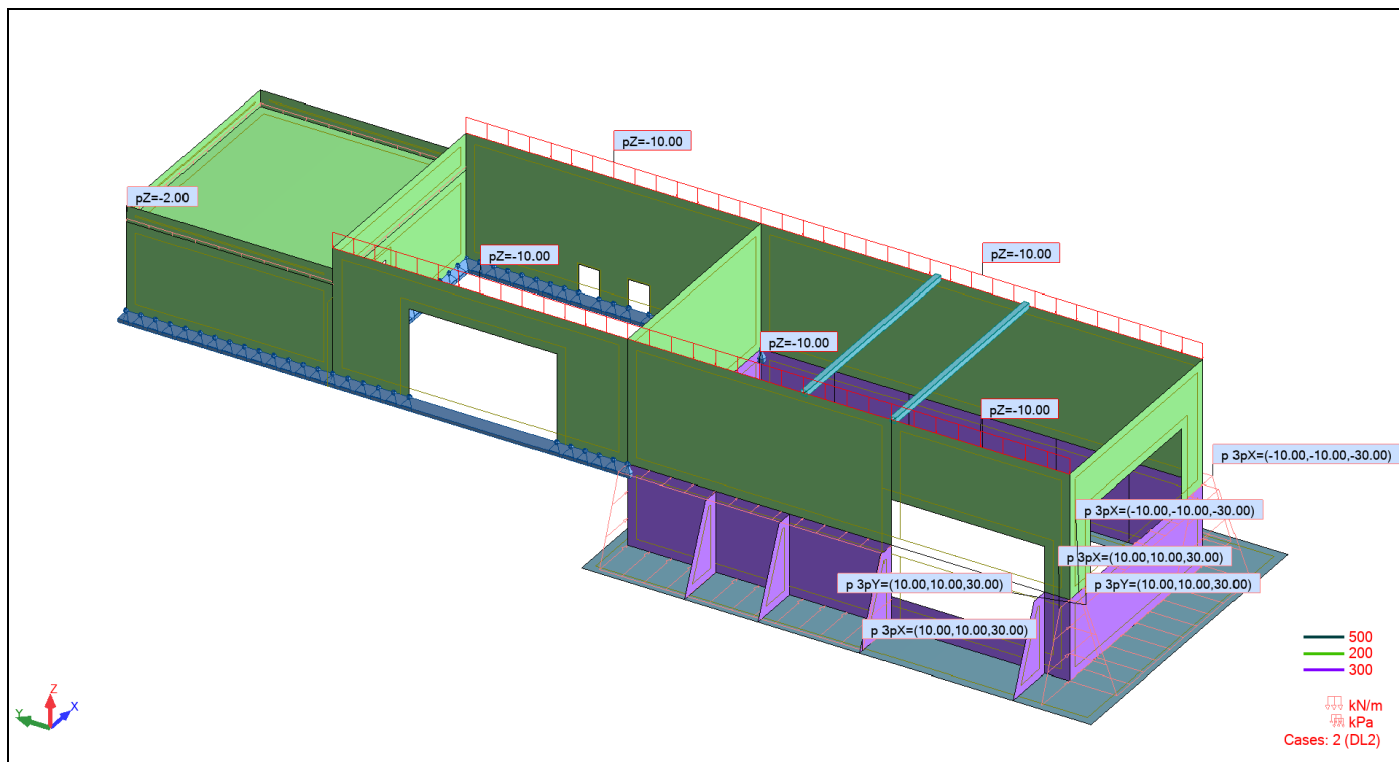
Data - Supports

Support name	List of nodes	
Pinned	609 640 1286 1287 1289to1291 1294to1298 1301 1320 1321 1323 1325 1327to1331 1439 1441 1443to1445 1473 1476 1483to1486 2709 2712to2714 2726to2732 2735 2736 2780 2810 2812 2813 2817to2820 2824 2835 2837 2838 2840 2868to2880 3256 3258 3276to3282	
Support name	List of edges	
Pinned	25_EDGE(1) 26_EDGE(1) 37_EDGE(1) 38_EDGE(3) 39_EDGE(3) 40_EDGE(3)	
Support name	List of objects	Support conditions
Pinned		UX UY UZ

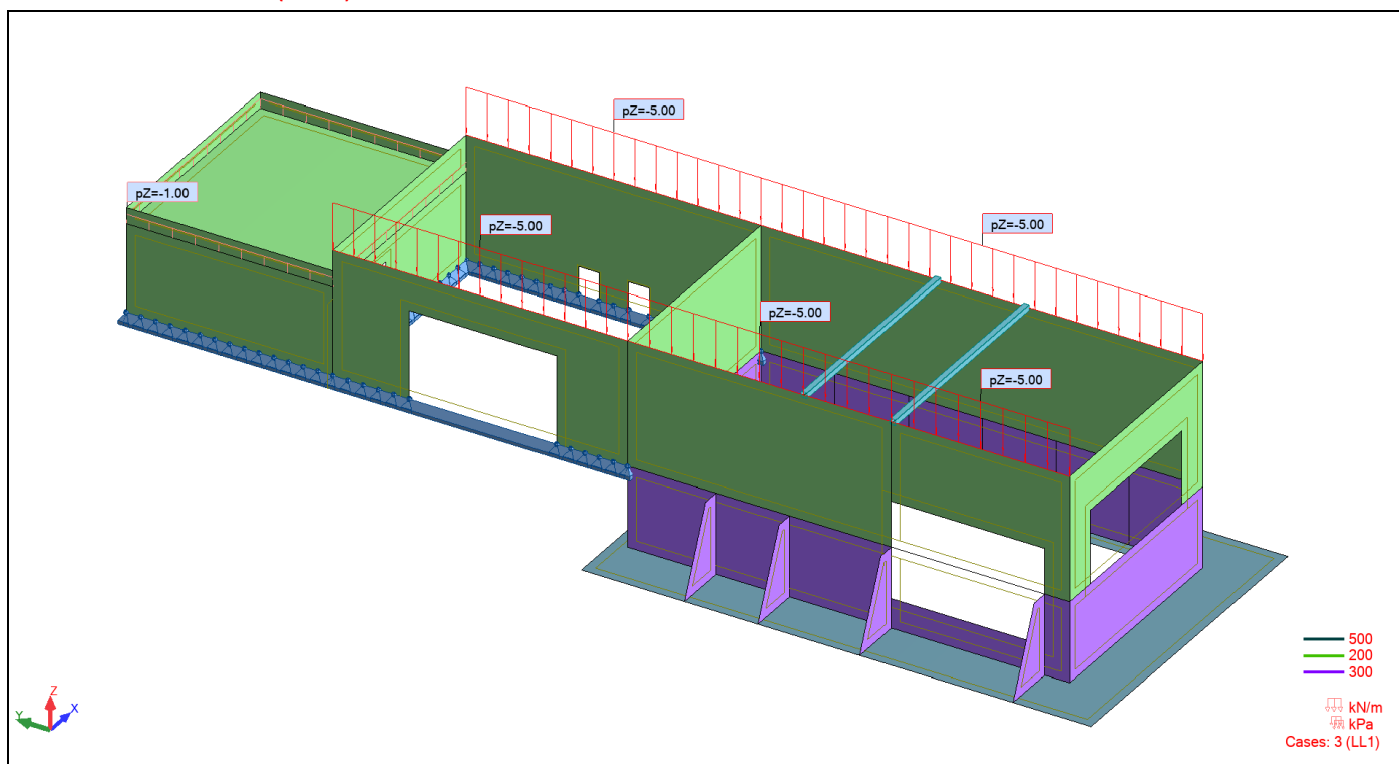
View - Cases: 1 (DL1) 2



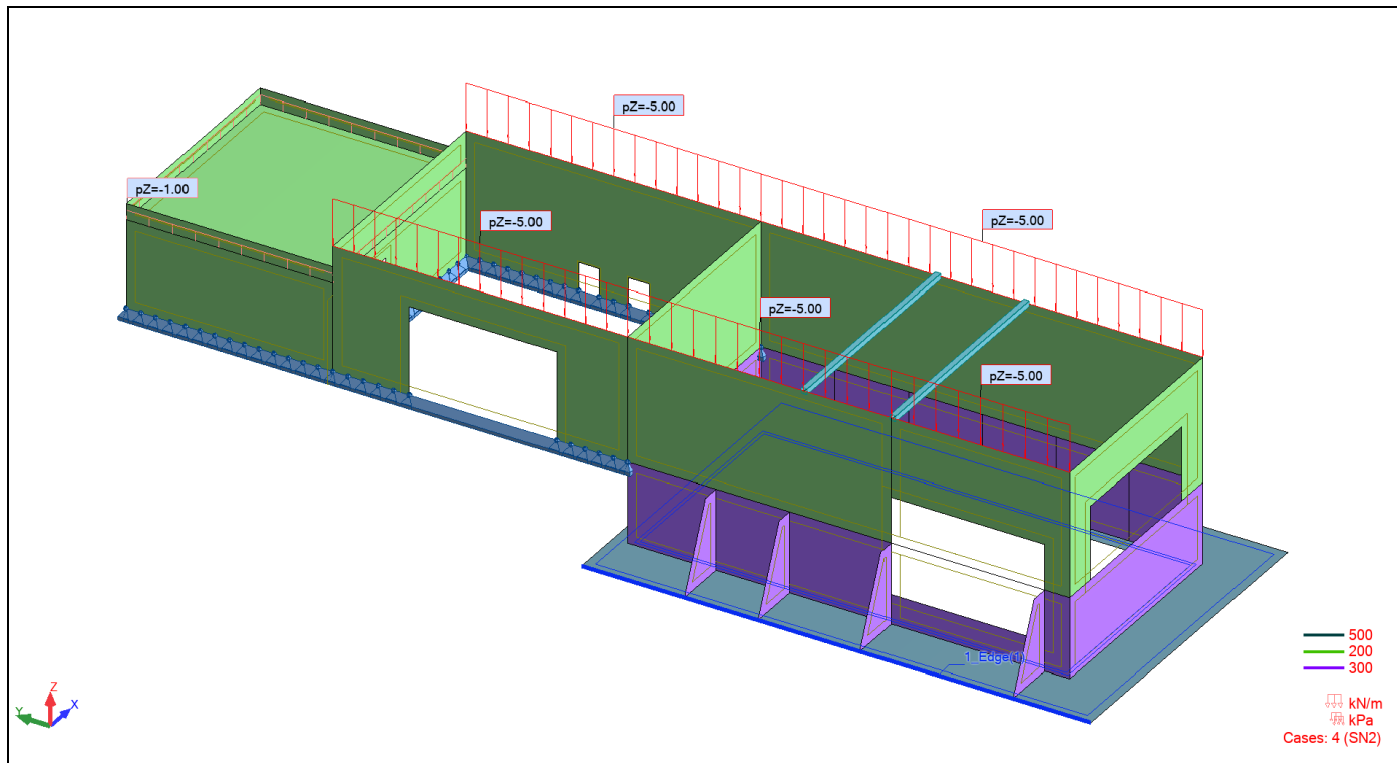
View - Cases: 2 (DL2)



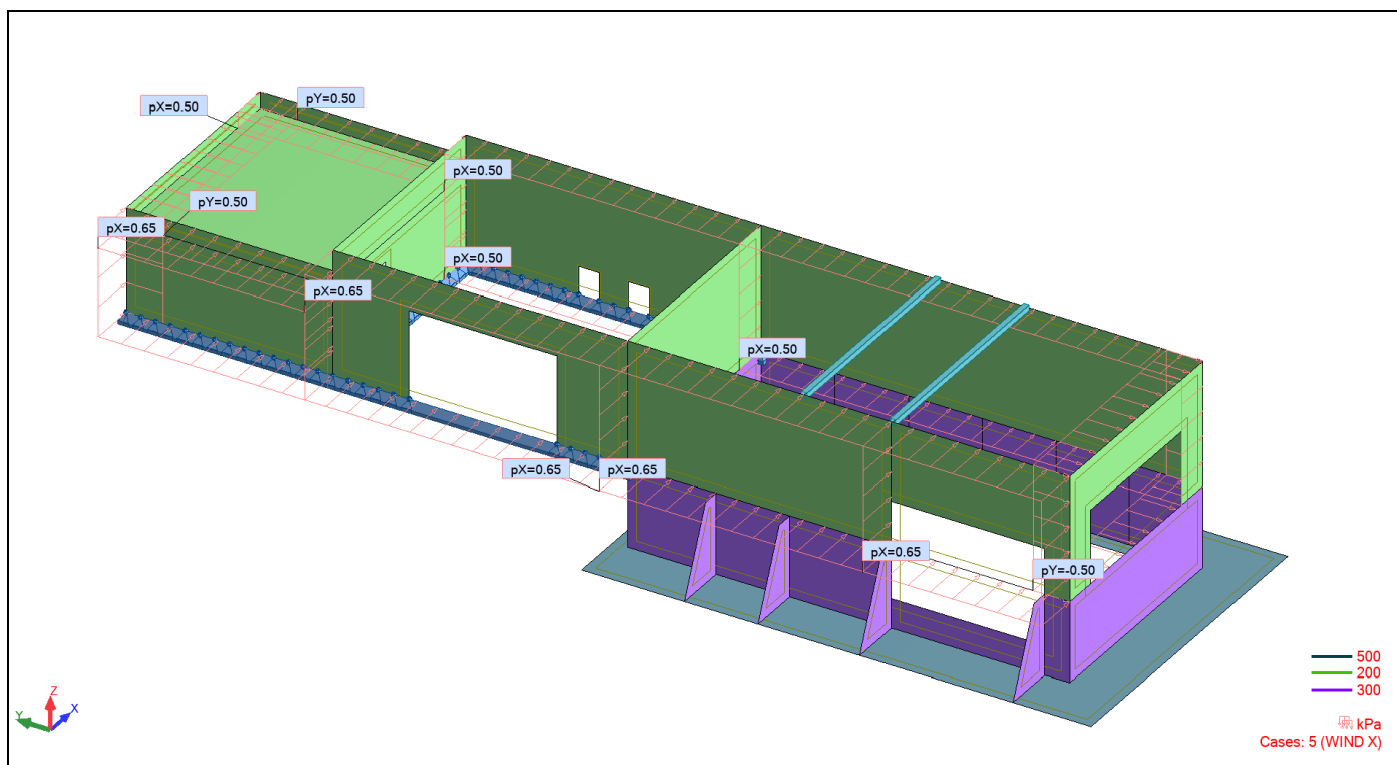
View - Cases: 3 (LL1)



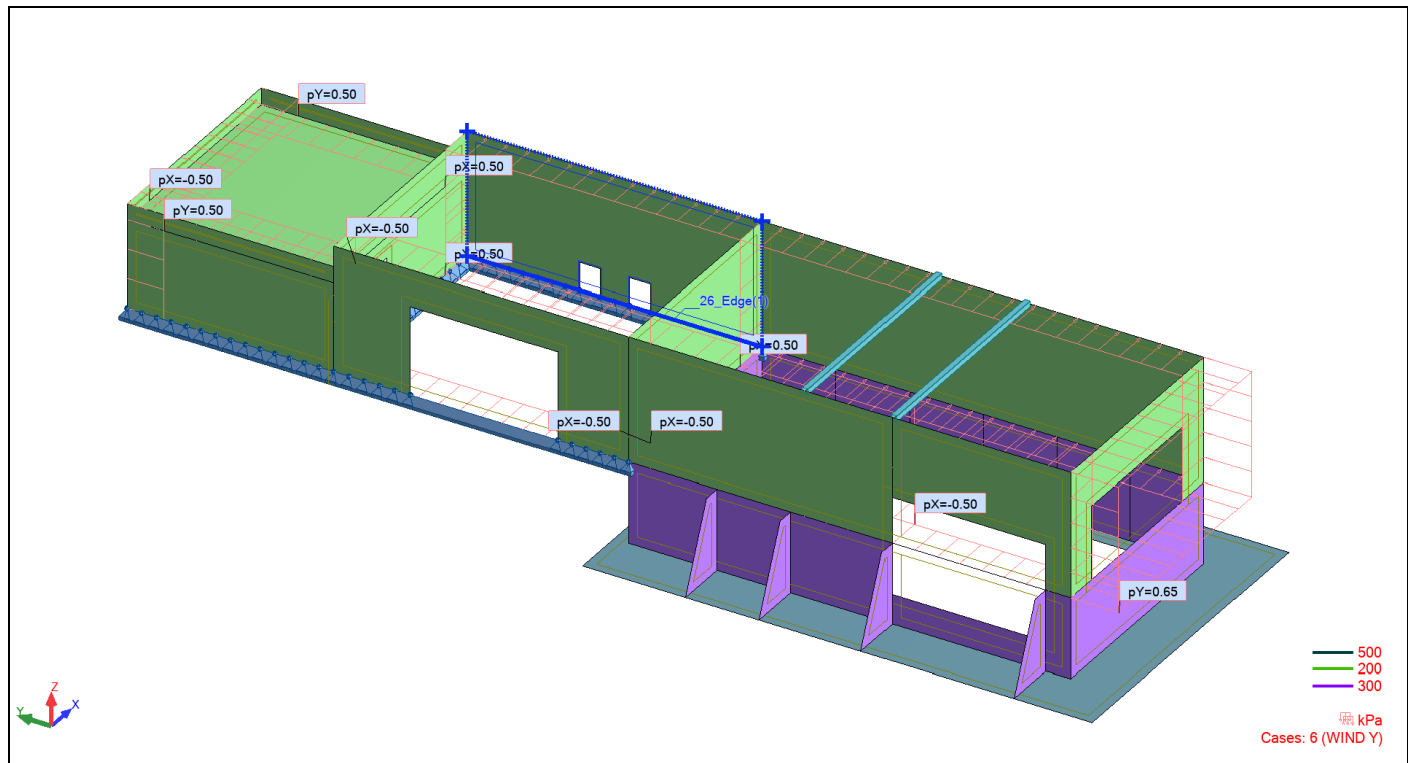
View - Cases: 4 (SN2)



View - Cases: 5 (WIND X)



View - Cases: 6 (WIND Y)



Loads - Values

Case	Load type	List	Load values
1	self-weight	1 17 23 25to27 30to32 37to40 47to50 60 99to102 135to138 141to145 147 148	PZ Negative Factor=1,00
2	(FE) linear on edges	23_EDGE(3) 25_EDGE(3) 26_EDGE(3) 99_EDGE(3) 100_EDGE(3)	PZ=-10,00(kN/m)
2	(FE) uniform	17	PZ=-2,00(kN/m ²)
2	(FE) uniform		PZ=-60,00(kN/m ²)
2	(FE) planar	30	PY1=10,00(kN/m ²) PY2=10,00(kN/m ²) PY3=30,00(kN/m ²) N1X=0,0(m) N1Y=0,0(m) N1Z=0,0(m) N2X=7,60(m) N2Y=-0,0(m) N2Z=0,0(m) N3X=7,60(m) N3Y=0,0(m) N3Z=-2,75(-m)
2	(FE) planar	30	PY1=10,00(kN/m ²) PY2=10,00(kN/m ²) PY3=30,00(kN/m ²) N1X=0,0(m) N1Y=15,00(m) N1Z=0,0(m) N2X=0,0(m) N2Y=-6,05(m) N2Z=0,0(m) N3X=0,0(m) N3Y=6,05(m) N3Z=-2,75(m)
2	(FE) planar	30 102	PX1=10,00(kN/m ²) PX2=10,00(kN/m ²) PX3=30,00(kN/m ²) N1X=0,0(m) N1Y=15,00(m) N1Z=0,0(m) N2X=0,0(m) N2Y=-6,05(m) N2Z=0,0(m) N3X=0,0(m) N3Y=6,05(m) N3Z=-2,75(m)
2	(FE) planar	30 31	PX1=-10,00(kN/m ²) PX2=-10,00(kN/m ²) PX3=-30,00(kN/m ²) N1X=7,60(m) N1Y=0,0(m) N1Z=0,0(m) N2X=7,60(m) N2Y=15,00(m) N2Z=0,0(m) N3X=7,60(m) N3Y=15,00(m) N3Z=-2,75(m)
3	(FE) linear on edges	23_EDGE(3) 25_EDGE(3) 26_EDGE(3) 99_EDGE(3) 100_EDGE(3)	PZ=-5,00(kN/m)
3	(FE) uniform	17	PZ=-1,00(kN/m ²)
4	(FE) uniform	17	PZ=-1,00(kN/m ²)
4	(FE) linear on edges	23_EDGE(3) 25_EDGE(3) 26_EDGE(3) 99_EDGE(3) 100_EDGE(3)	PZ=-5,00(kN/m)
5	(FE) uniform	25 40 47 99 100	PX=0,65(kN/m ²)
5	(FE) uniform	23 26 38 50	PX=0,50(kN/m ²)

Case	Load type	List	Load values
5	(FE) uniform	39 49	PY=0,50(kN/m2)
5	(FE) uniform	27	PY=-0,50(kN/m2)
6	(FE) uniform	39 49	PY=0,50(kN/m2)
6	(FE) uniform	23 26 38	PX=0,50(kN/m2)
6	(FE) uniform	25 40 47 99 100	PX=-0,50(kN/m2)
6	(FE) uniform	27	PY=0,65(kN/m2)

Loads - Cases

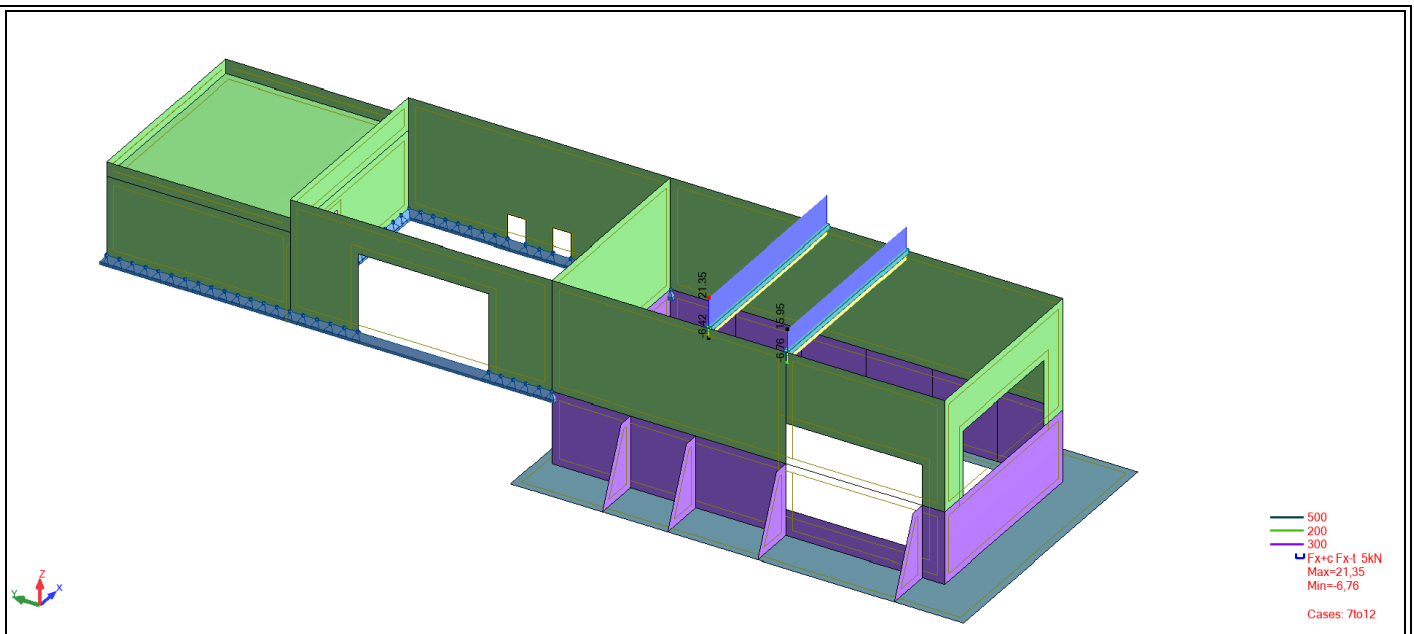
Case	Label	Case name
1	DL1	DL1
2	DL2	DL2
3	LL1	LL1
4	SN2	SN2
5	WIND X	WIND X
6	WIND Y	WIND Y
7		ULS
8		ULS+
9		ULS-
10		SLS
11		SLS+
12		SLS-

Case	Nature	Analysis type
1	Structural	Static - Linear
2	Non-structural	Static - Linear
3	Category A	Static - Linear
4	Snow H	Static - Linear
5	wind	Static - Linear
6	wind	Static - Linear
7		Static - Linear
8		Static - Linear
9		Static - Linear
10		Static - Linear
11		Static - Linear
12		Static - Linear

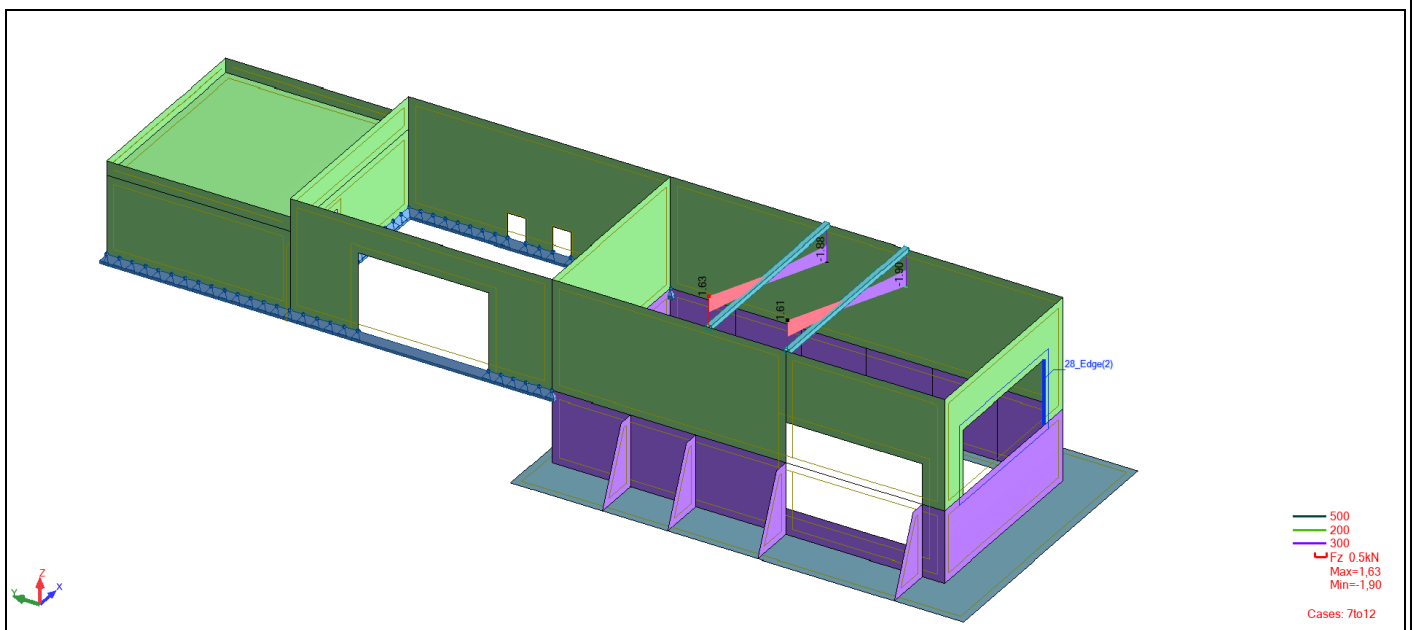
Combinations

Combinations	Name	Analysis type	Combination type	Case nature	Definition
--------------	------	---------------	------------------	-------------	------------

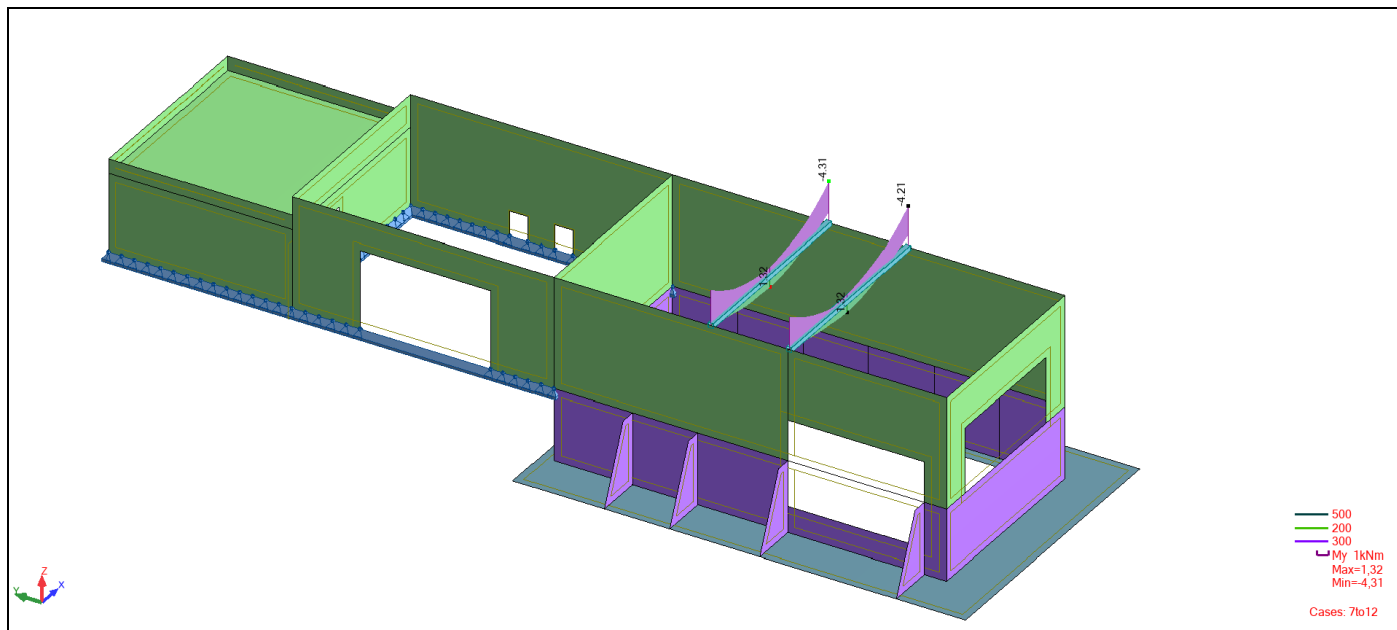
View - FX; Cases: 7to12



View - FZ; Cases: 7to12



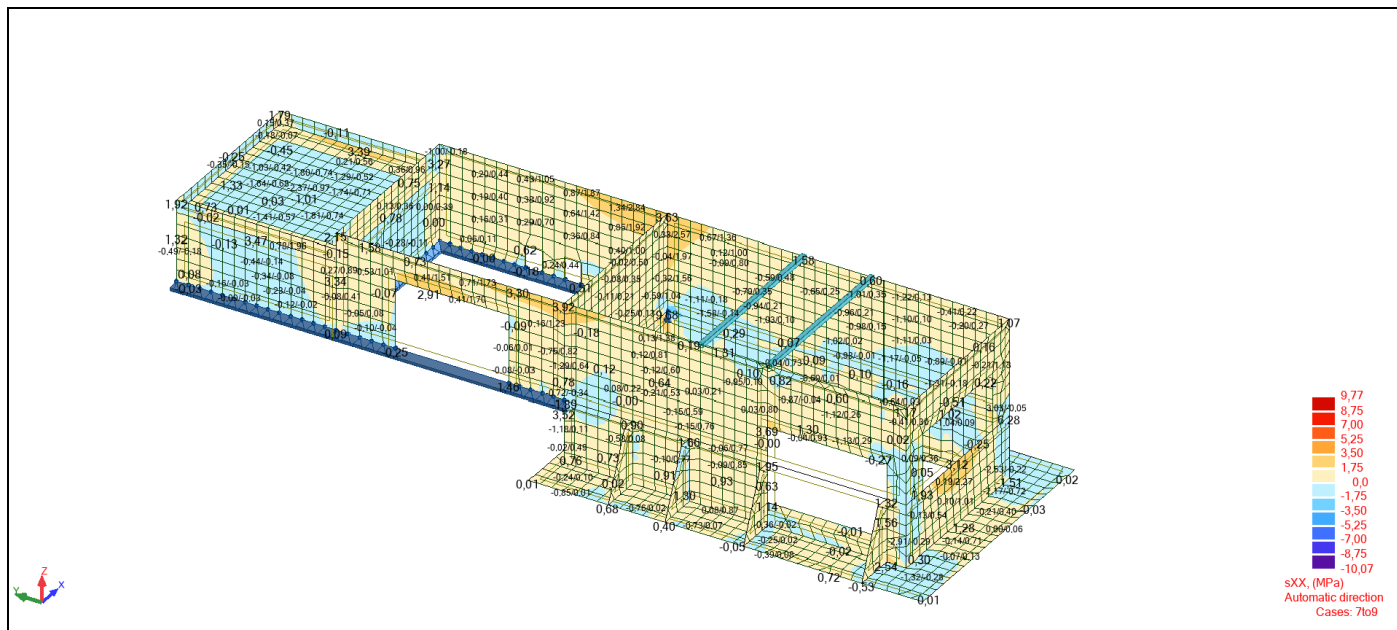
View - MY; Cases: 7to12



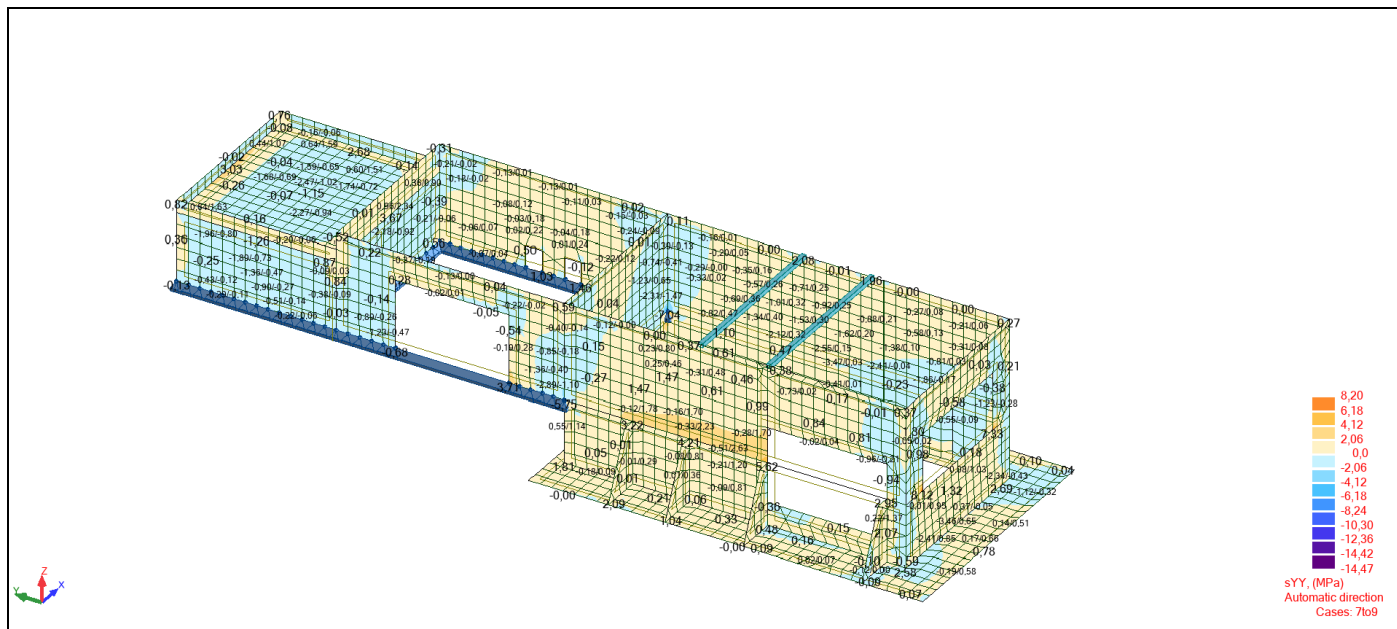
Member Forces ULS: envelope

Bar	FX (kN)	FY (kN)	FZ (kN)	MX (kNm)	MY (kNm)	MZ (kNm)
147 / MAX	15,95	0,00	1,61	0,00	0,83	0,91
Node	35	35	35	35	35	36
Case	ULS/8	ULS/9	ULS/6	2	5	ULS/7
147 / MIN	-6,76	-0,23	-1,90	-0,01	-4,21	-0,82
Node	35	35	36	35	36	35
Case	ULS/5	ULS/7	ULS/10	ULS/10	ULS/8	ULS/11
148 / MAX	21,35	0,18	1,63	0,01	0,88	0,91
Node	37	37	37	37	37	38
Case	ULS/7	ULS/14	ULS/6	ULS/13	5	ULS/15
148 / MIN	-6,42	-0,26	-1,88	-0,00	-4,31	-1,12
Node	37	37	38	37	38	37
Case	ULS/4	ULS/16	ULS/14	ULS/4	ULS/8	ULS/16

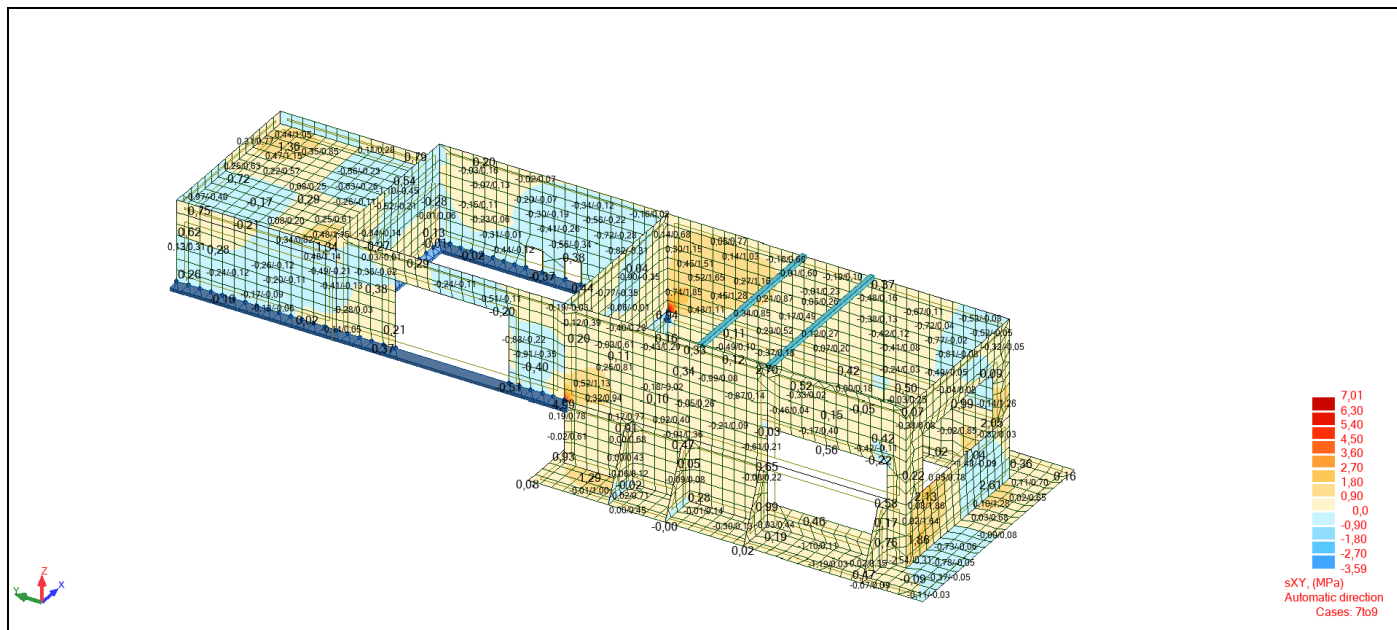
View - sXX (MPa) Layer Upper Automatic direction Cases: 7to9 (+)



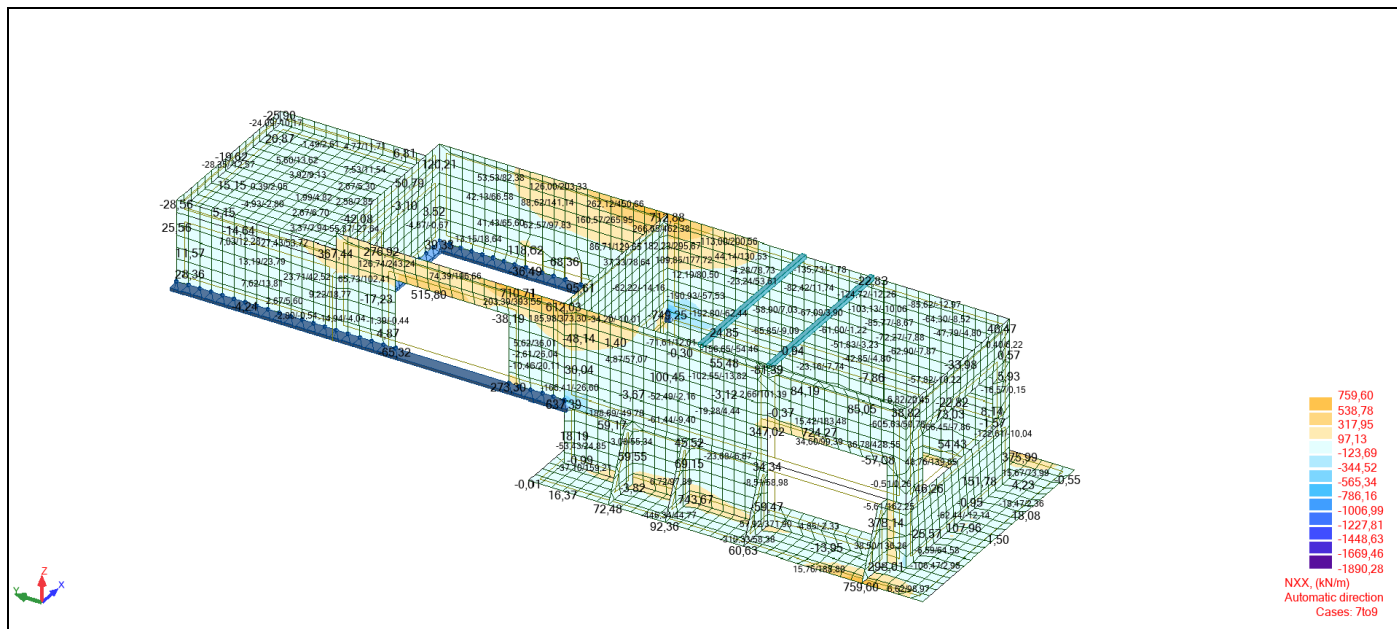
View - sYY (MPa) Layer Upper Automatic direction Cases: 7to9 (+)



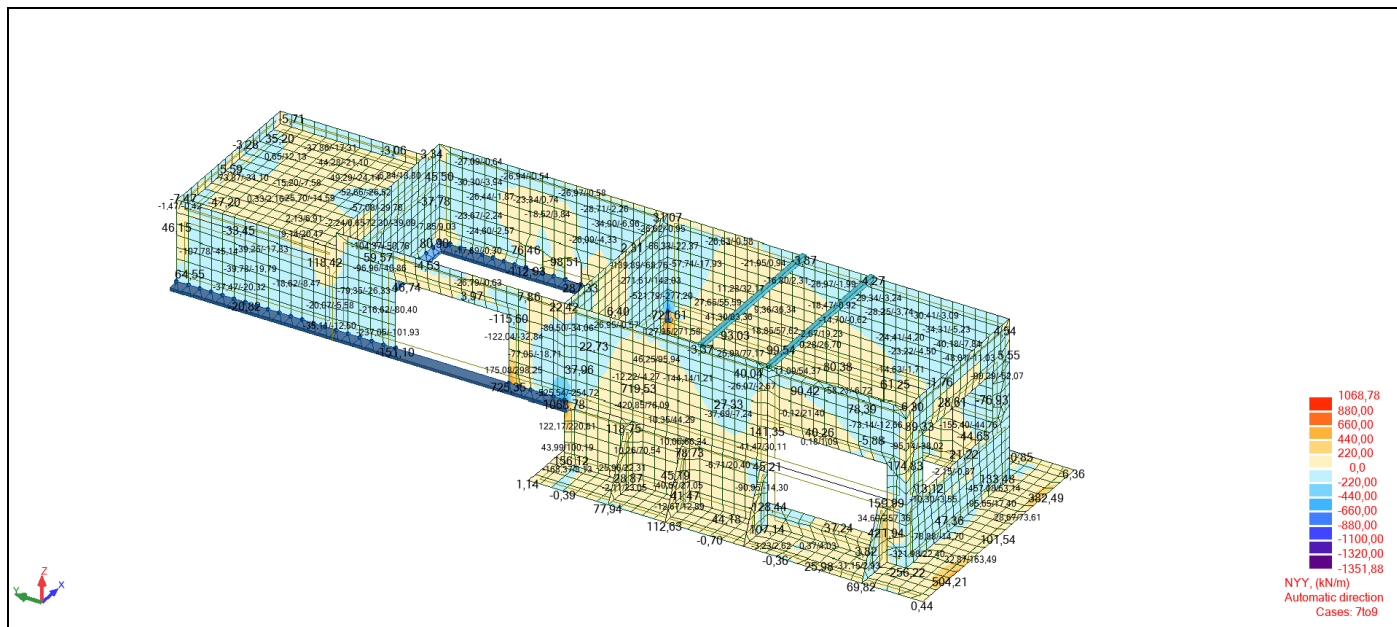
View - sXY (MPa) Layer Upper Automatic direction Cases: 7to9 (+)



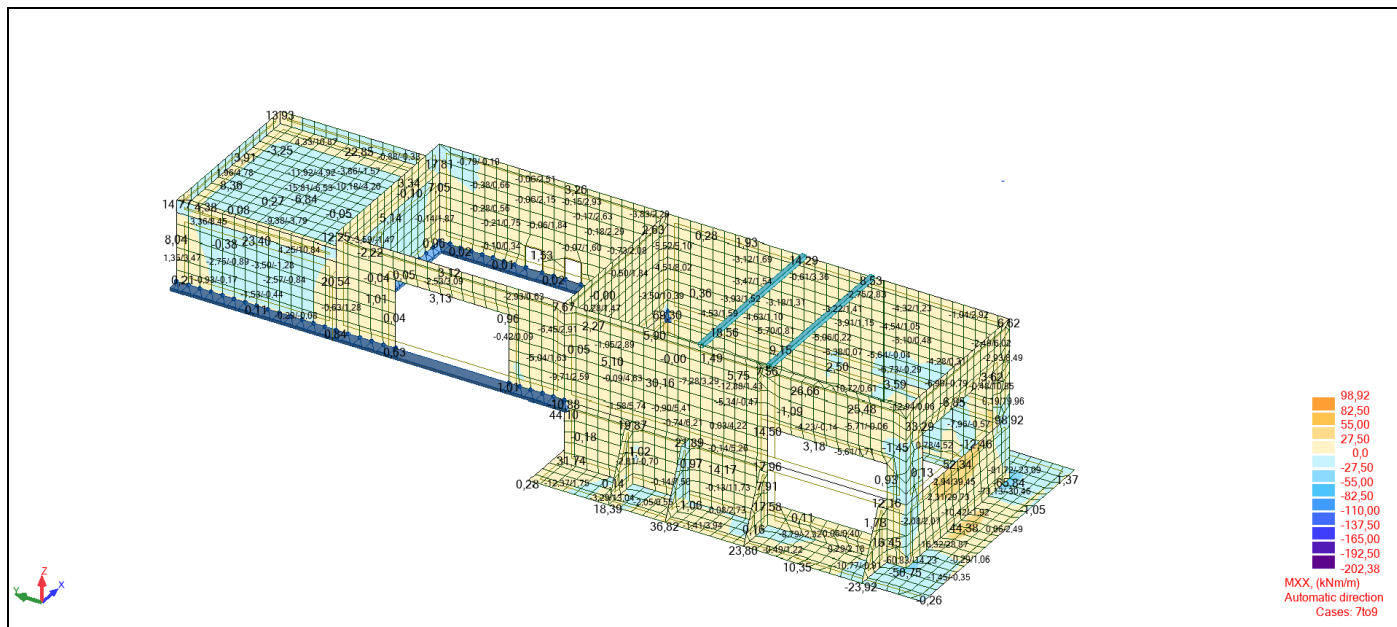
View - NXX (kN/m) Automatic direction Cases: 7to9 (+)



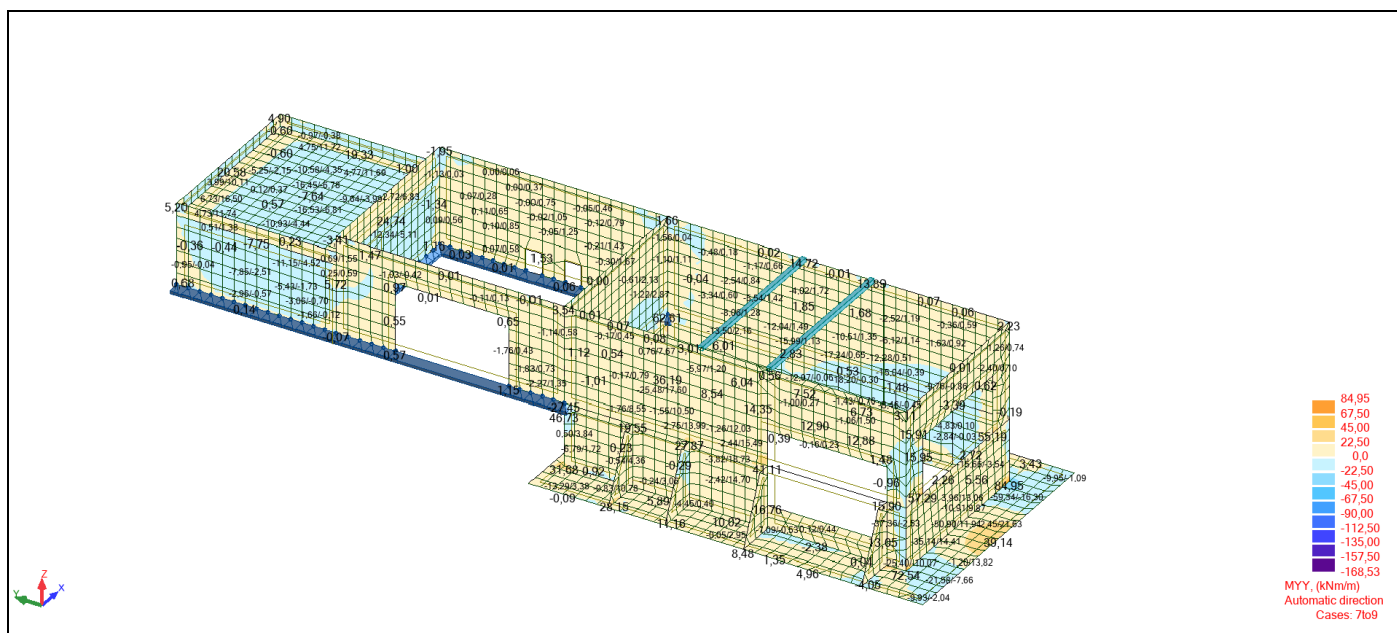
View - NYY (kN/m) Automatic direction Cases: 7to9 (+)



View - MXX (kNm/m) Automatic direction Cases: 7to9 (+)



View - MYY (kNm/m) Automatic direction Cases: 7to9 (+)

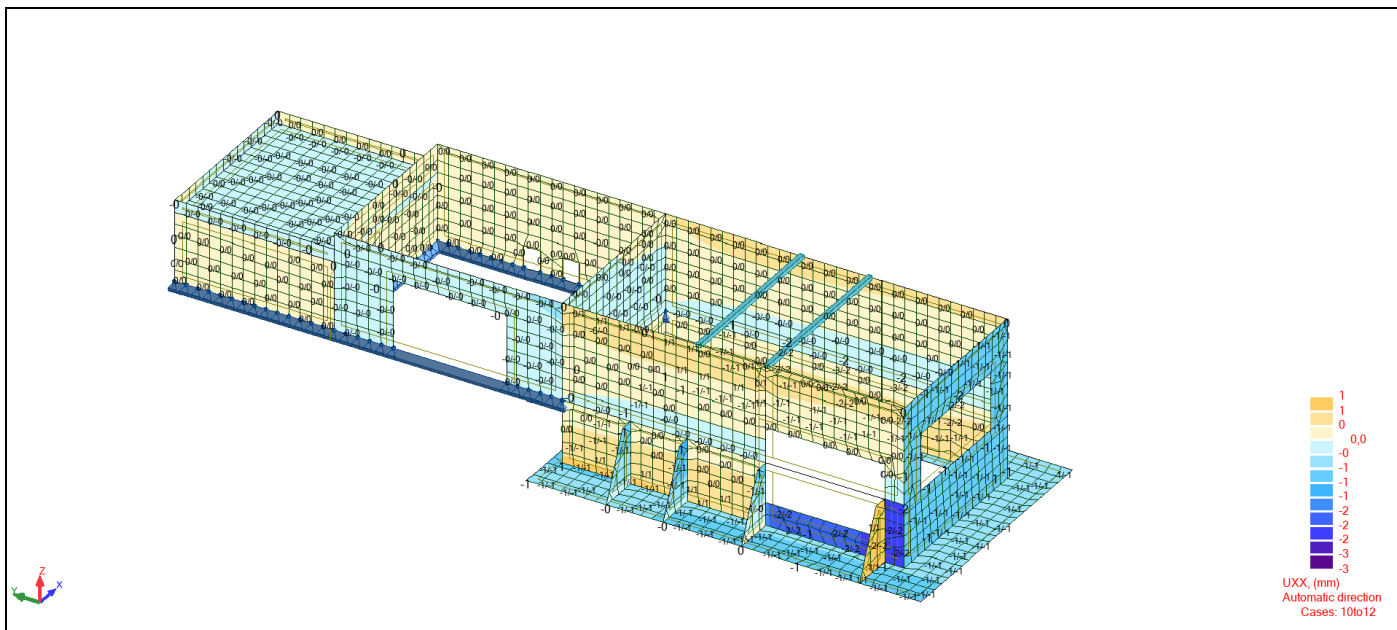


Stresses - Global extremes

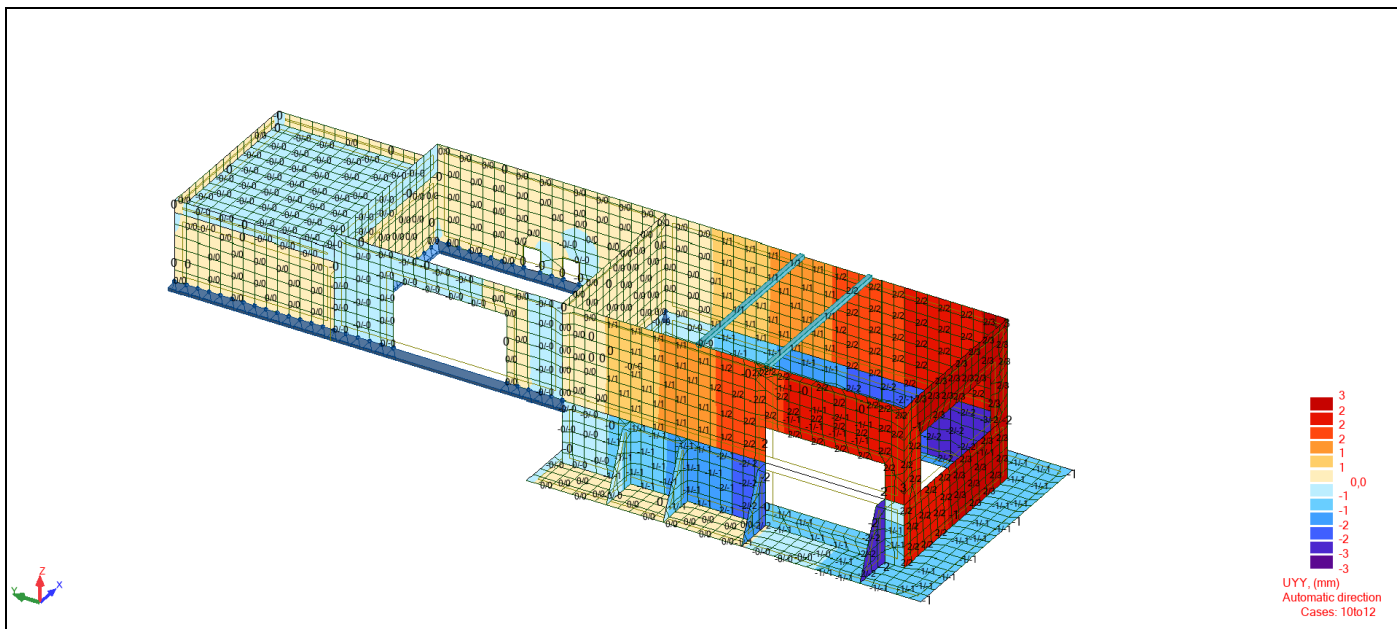
	S max (MPa)	S min (MPa)	S max(My) (MPa)
MAX	25,04	0,36	17,63
Bar	147	147	148
Node	36	35	38
Case	ULS/8	ULS/3	ULS/8
MIN	-0,60	-16,79	0,07
Bar	147	147	148
Node	36	36	37
Case	6	ULS/8	ULS/3

	S max(Mz) (MPa)	S min(My) (MPa)	S min(Mz) (MPa)	Fx/Ax (MPa)
MAX	4,57	-0,07	-0,00	5,52
Bar	148	148	147	148
Node	37	37	36	37
Case	ULS/16	ULS/3	ULS/9	ULS/7
MIN	0,00	-17,63	-4,57	-1,75
Bar	147	148	148	147
Node	36	38	37	35
Case	ULS/9	ULS/8	ULS/16	ULS/5

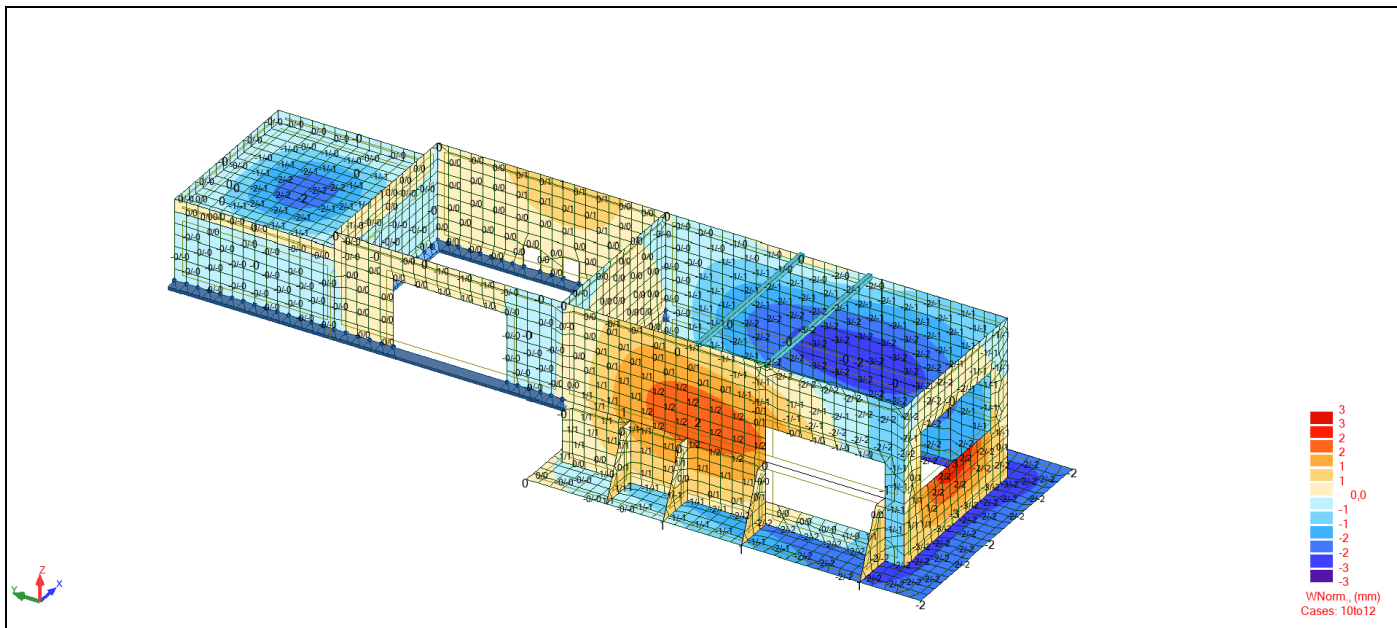
View - UXX (mm) Automatic direction Cases: 10to12 (+)



View - UYY (mm) Automatic direction Cases: 10to12 (+)



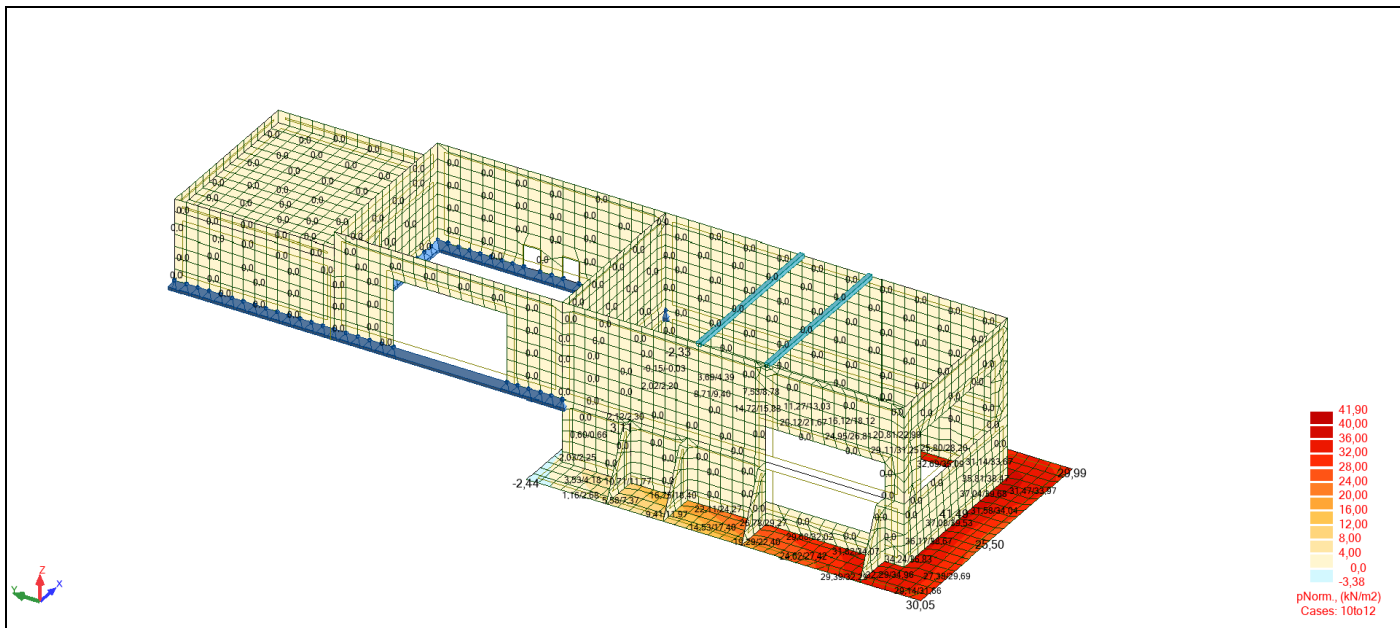
View - WNorm. (mm) Cases: 10to12 (+)



Displacements SLS: global extremes

	UX (mm)	UY (mm)	UZ (mm)	RX (Rad)	RY (Rad)	RZ (Rad)
MAX	2	3	1	0,001	0,001	0,001
Node	2019	323	2491	3113	1573	307
Case	SLS/4	SLS/6	2	SLS/8	SLS/4	SLS/6
MIN	-3	-1	-3	-0,001	-0,001	-0,001
Node	1714	1898	2605	3136	2025	327
Case	SLS/2	SLS/4	SLS/2	SLS/8	2	SLS/6

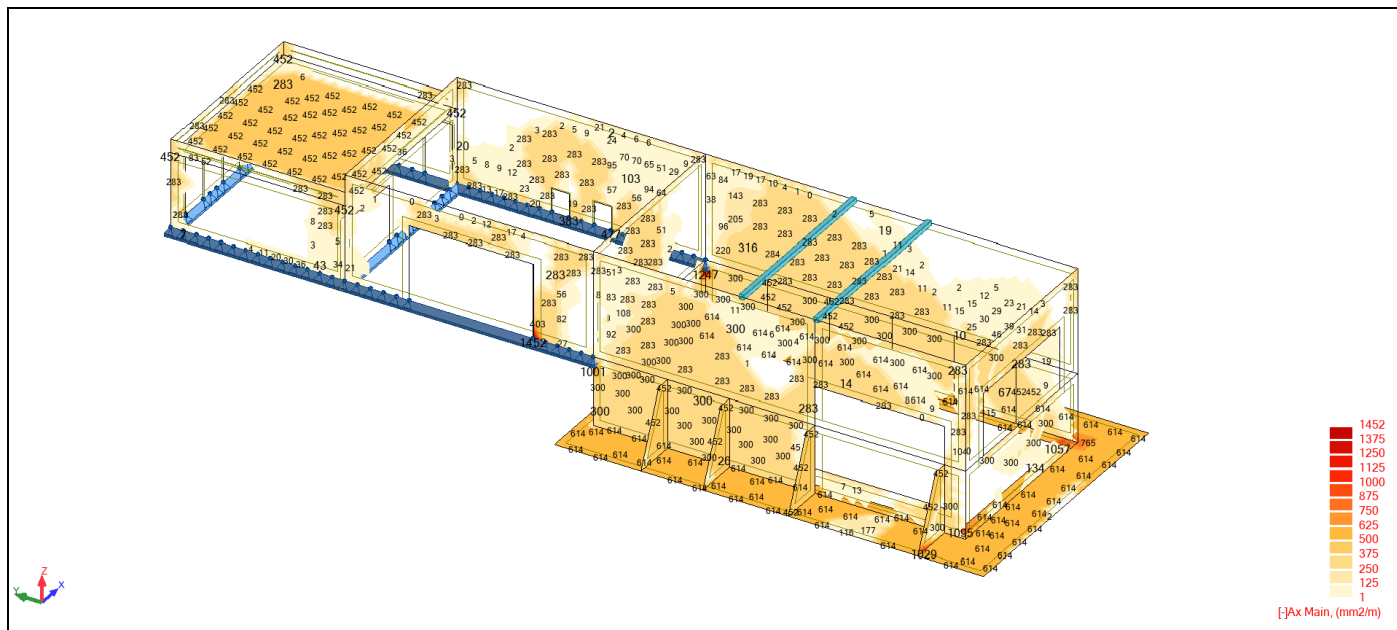
View - pNorm. (kN/m2) Cases: 10to12 (+)



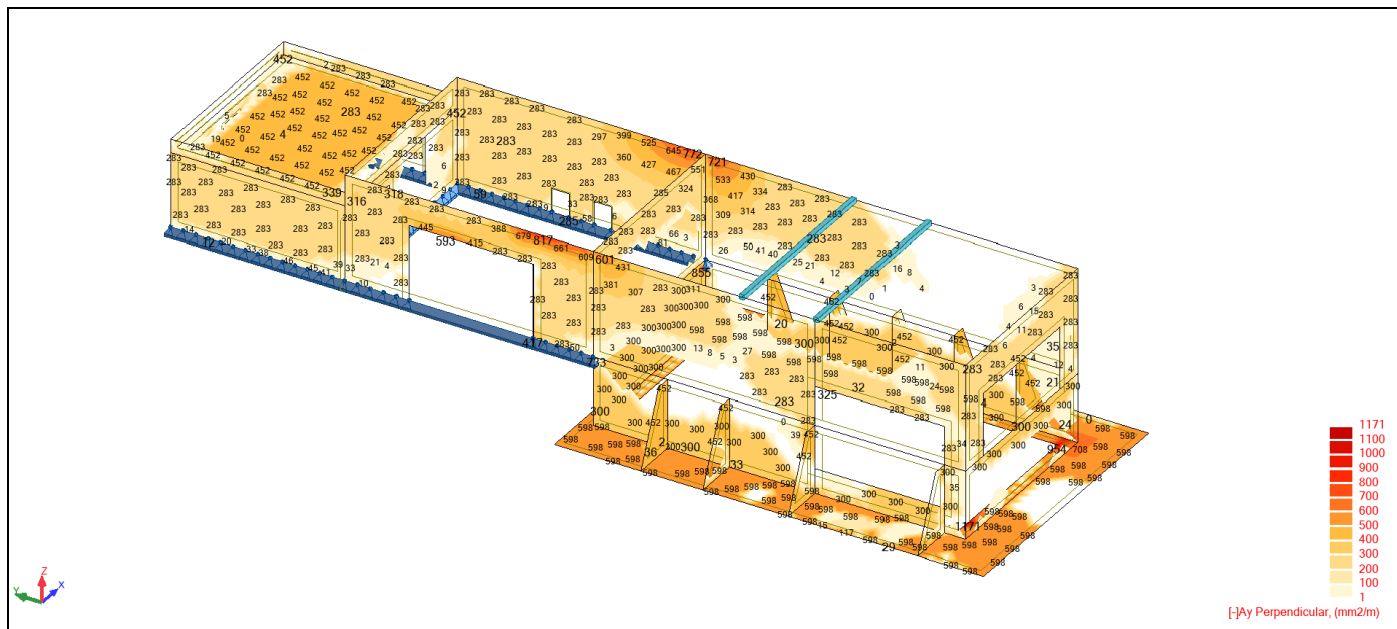
Reactions ULS: global extremes

	FX (kN)	FY (kN)	FZ (kN)	MX (kNm)	MY (kNm)	MZ (kNm)
MAX	277,58	79,29	1129,36	0,00	0,00	0,00
Node	609	1445	640	1473	609	609
Case	ULS/6	ULS/23	ULS/23	ULS/23	ULS/22	ULS/27
MIN	-266,74	-1008,12	-139,12	-0,00	-0,00	-0,00
Node	640	609	1445	640	640	1325
Case	ULS/8	ULS/19	ULS/23	ULS/23	ULS/23	ULS/7

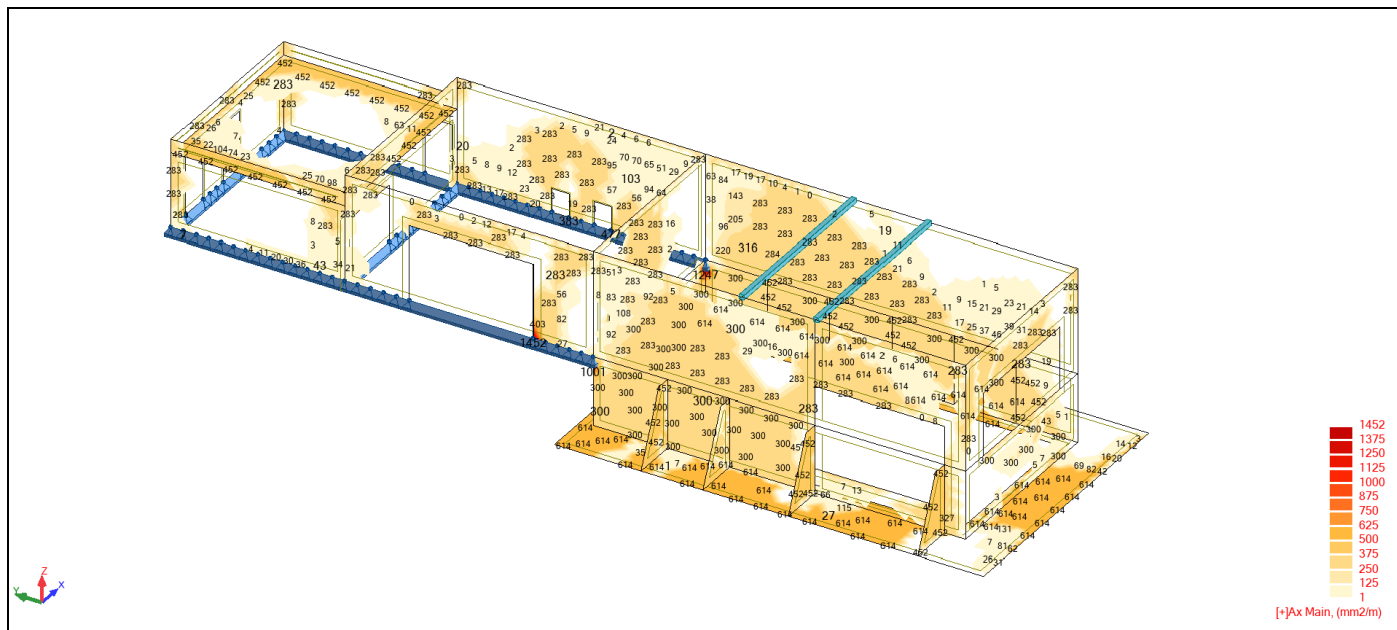
View - [-]Ax Main (mm²/m)



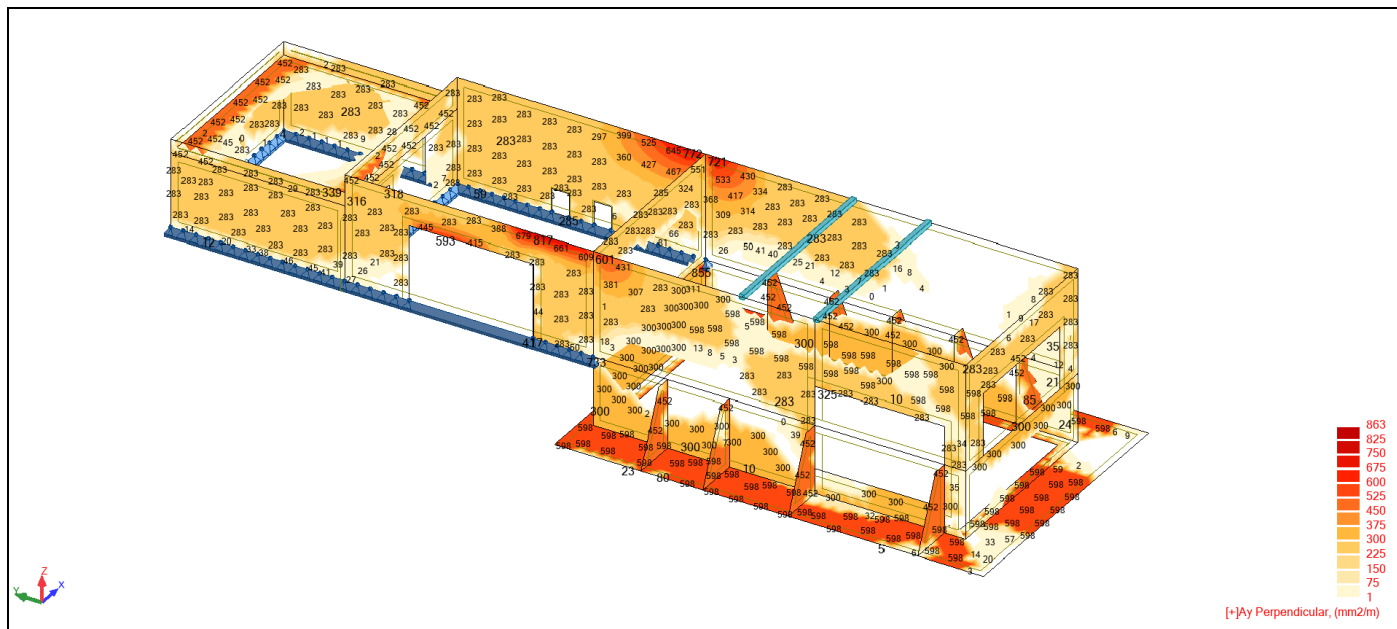
View - [-]Ay Perpendicular (mm²/m)



View - [+]Ax Main (mm²/m)



View - [+]Ay Perpendicular (mm²/m)



View - [-]Deflection (mm)

